

AJ 9400 - IX

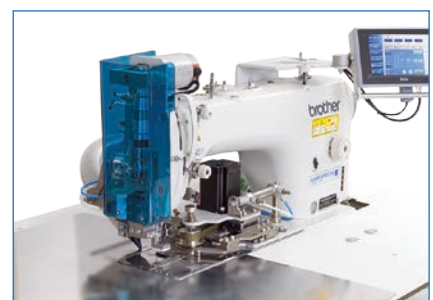
COVER STICH AUTOMAT
with TEMPLATE (AUTO JIG)



PERFORMANCE

3500 - 4000 Pieces Sewing Patterns / 8 hours

440 - 500 Pieces Sewing Patterns / 1 hour



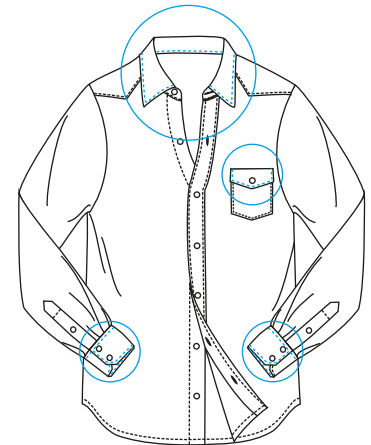
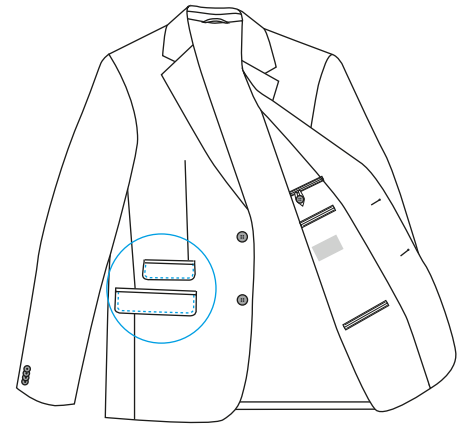
The Automatic template stitching unit AJ 9400 – IX enables small and medium size garment components to be assembled quickly and accurately by unskilled operators. The automat ensures that the stitched components such as flaps, waistband extensions, epaulettes and cuffs have perfect size, shape and fullness, for the maximum quality regardless of the operator's skill or experience level. Component size or shape can be changed in a few seconds only by exchanging the jigs used.

TECHNICAL SPECIFICATIONS

- **Brother** Direct Drive Sewing Head
- **Beijer Electronics**, Windows Based 256 Million Colour Supported Touch Screen Control Panel
- Easy to use, with Pictures on the Operator Panel and with 50 Different Programming
- Sequential/Cycle Programming for Different jig Models
- **PLC** Control Unit
- Automatic Cycling Step Motor Unit to move the Jig Program support enabling Easy and Comfortable Jacket Flaps of Different Patterns
- Program supports easy and Comfortable working options for round, angled and Square Latch Ends for Trousers
- Possibility of programming for corner-stitches of Jigs and adjusting stitch steps
- Programmable start and end back-tack or optionally adjustable stitch condensing
- Automatic thread trimming and cleaning system at the end of sewing
- Linear Motor Control, Edge Cutting System
- Ability to fix the Jig length (stitch) from panel either with photocell or mm input
- Ability to make front and end cutting in stitch start and end, stitch side cuts
- Cutting- width (after sewing edge) between 3.3mm and 6 mm
- Suction Unit for Cutting waste with waste Collection Chamber
- Jig Ejection upon finish
- Error Detecting System
- Thread monitor

AREAS OF USAGE

- Men's jackets and women's Jackets' Side Pocket Flaps
- Men's Trousers and Women's Trousers' Latch Ends and Flaps
- Coat, Topcoat Side Pocket Flaps and Shoulder Straps
- Various Parts of Military & Hunting Camouflage Clothing

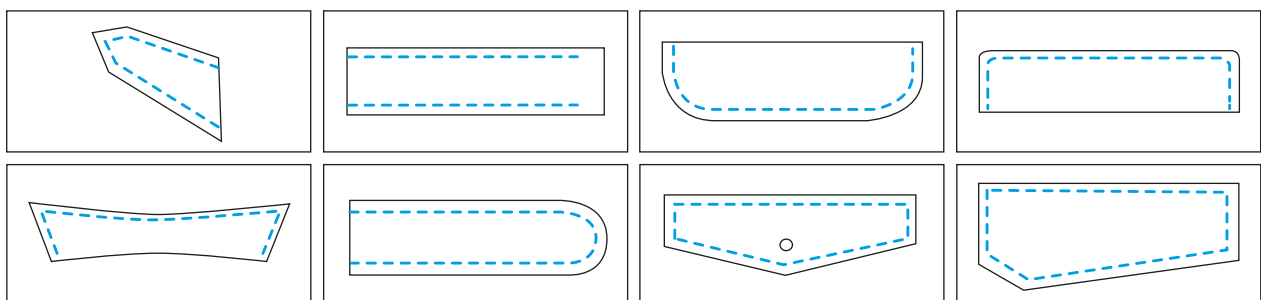


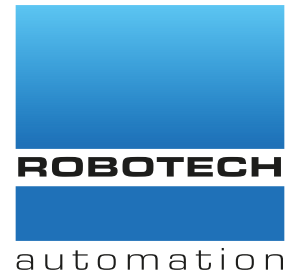
TECHNICAL DETAILS

Max. Sewing Speed : 3.600 r.p.m
 Max. Stitch Length : 0,5 or 5 mm
 Connection Voltage: AC 230 V, 50/60 Hz
 Air Pressure : 6 bar

DIMENSIONS

L: 115 cm / W: 80 cm / H: 112 cm
 Packing Size : 127 cm x 89 cm x 145 cm
 Machine Net Weight : approx. 135 kg
 Machine Gross Weight : approx. 155 kg





OZ 5400 - IX

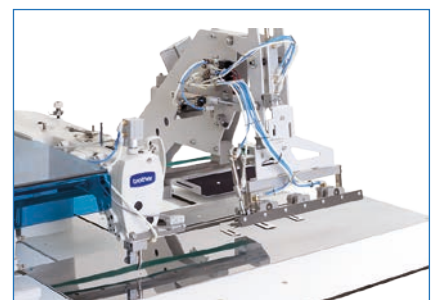
JACKET and TROUSER POCKET FACINGS AUTOMAT



PERFORMANCE

3500 - 4000 Pocket facings / 8 Hours

438 - 500 Pocket facings / 1 Hour



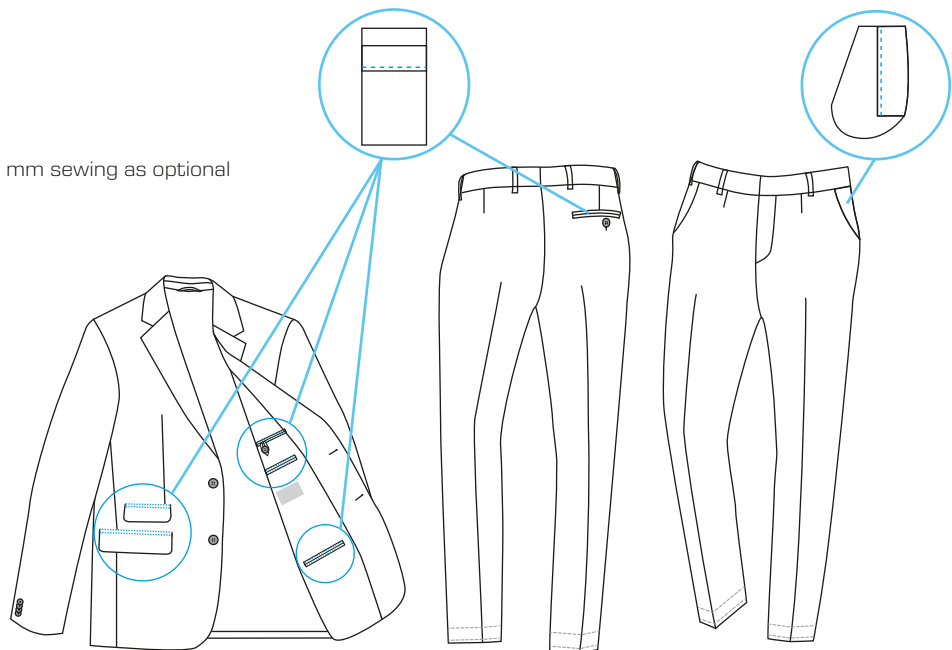
The OZ 5400-IX is a sewing machine with which all straight facing can be stitched efficiently and with good stitching quality on pocket pouches. Different top stitch width can be adjusted by an efficient folding device. The program enables sewing over the entire length of the pocket pouch as well as sewing only over the length of the facings.

TECHNICAL SPECIFICATIONS

- **Brother** Direct Drive Sewing Head
- **Beijer** Brand, Windows Based 256 Million Color Supported Touch Screen Control Panel
- Illustrated on Operator Panel, Easy to use up to 50 Different Programming
- Sequential/Cycle Program for Different Stitch Sizes
- **PLC** Control Unit
- **Panasonic** AC Servo Motor& Driver Controlled Clamp Unit
- Fine Stitch and Zig-zag Options from Panel Stitch Starts and Ends
- In beginning and end of sewing, works as photocell control or mm control
- Sensitive feeding station for very thin sewing edge stitches
- Folding Station featuring 300 mm Sewing (Standard)
- Vacuum motor connection preparing unit
- Motor controlled Stacker with Up/Down Movement
- Height-adjustable Machine chassis featuring front-operation
- Error Detecting Systems
- Thread monitor

OPTIONS

- Extra Reference Laser
- Vacuum Motor
- Folding Station featuring 450 mm sewing as optional



TECHNICAL DETAILS

Max. Sewing Speed : 4,500 r.p.m
 Max. Stitch Length : 0,5 or 5 mm
 Stitch type : 301 (Lockstitch)
 Connection Voltage: AC 230 V, 50/60 Hz
 Air Pressure : 6 bar

DIMENSIONS

L: 140 cm / W: 90 cm / H: 140 cm
 Packing Size : 164 cm x 94 cm x 145 cm
 Machine Net Weight : approx. 200 kg
 Machine Gross Weight : approx. 240 kg

