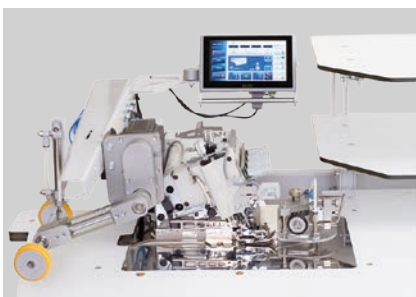


## FX 6300 EXT - IX JACKET SLEEVE LINING SEAMER AUTOMAT



### PERFORMANCE

2000 Pieces of Front or Back Edge / 8 Hours  
250 Pieces of Front or Back Edge / 1 Hour



Long seams such as sleeve lining seams, Jacket lining, Jacket side and Jacket back seams are sewn by the sewing unit FX 6300 EXT - IX with a constant high quality.

## TECHNICAL SPECIFICATIONS

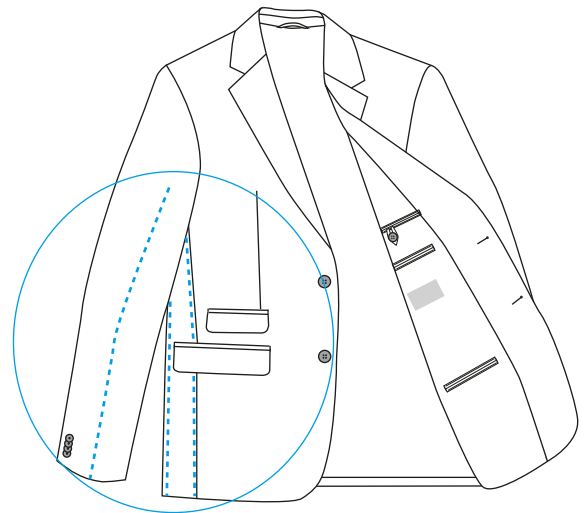
- Pegasus EXT 3216 Five thread Variable top feed safety stitch sewing head
- Long version Machine, frame with adjustable height providing the possibility of working from the side
- Beijer Electronics , Windows Based 256 Million Colour Supported Touch screen Control Panel
- Easy to use, with Pictures on the Operator Panel and with 50 Different Programming
- Feature to operate with all sides in order/cycle programming
- PLC Control Unit
- Efka 550 W Mini Stop DC Servo Sewing Motor
- Stitching starts automatically with photocell data feed
- Thread cutting and suction at stitch beginning and end
- Fabric edge controller which regulates and guides the entry of the work into the machine ( Zippy)
- Air blowing holes on the table provides easy flow of fabric
- Top palette carrier with step motor controller moves the work to the stacker
- Graphic program for using the lower-upper fullness on desired places
- Differential top and bottom feed with step motor for different fullness values
- Differential top and bottom feed with step motor enables the processing of stretch material
- Pneumatic fast stacking
- Extra working table
- Yarn waste compartment

## OPTIONS

Universal Stacking

## AREAS OF USAGE

Jacket Sleeve lining with skip stitch,  
Jacket lining, Jacket side seam, Jacket back seam

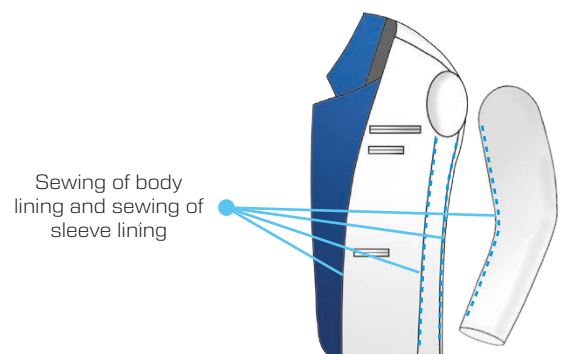


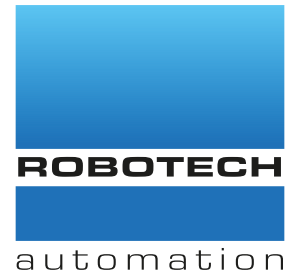
## TECHNICAL DETAILS

Max. Sewing Speed : 6.000 r.p.m  
Max. Stitch Length : 1 or 3,8 mm  
Connection Voltage: AC 230 V, 50/60 Hz  
Air Pressure : 6 bar

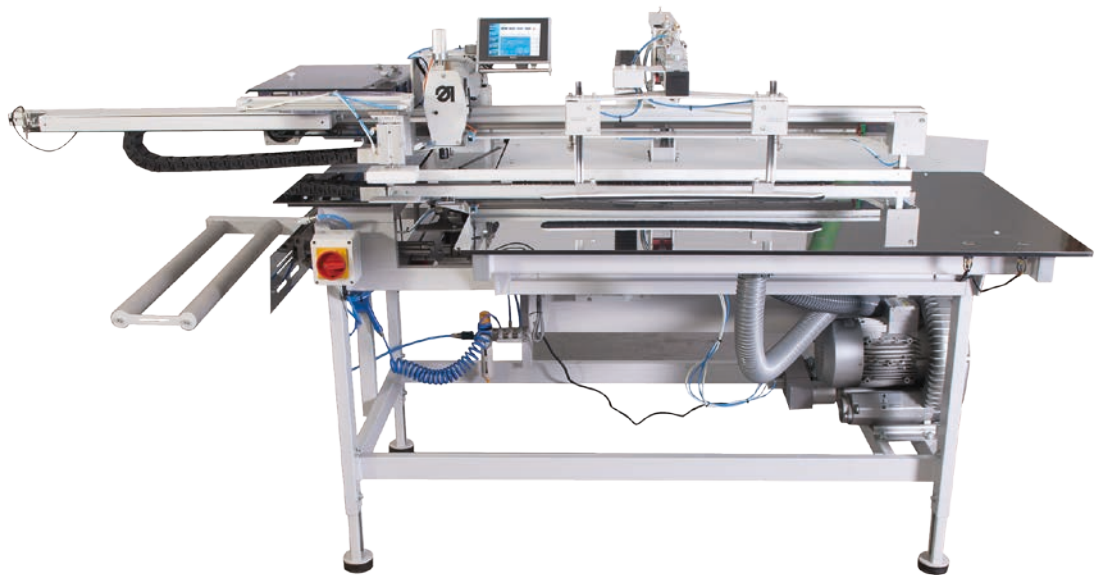
## DIMENSIONS

L: 155 cm / W: 105 cm / 120 cm  
Packing Size : 186 cm x 117 cm x 145 cm  
Machine Net Weight : approx. 145 kg  
Machine Gross Weight : approx. 185 kg



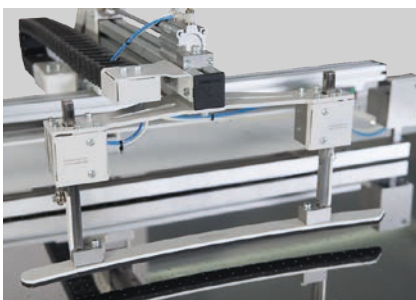


## UK 4100 - IX CENTER - BACK AND SLEEVE SEAM AUTOMAT



### PERFORMANCE

1500 pieces / 8 Hours  
188 pieces / 1 Hour



Long seams such as Center-back and sleeve seams are sewn by the sewing unit UK 4100-IX with continuous high quality. The integrated feed technology allows a universal use for different materials.

An X/Y controlled sewing program according to the desired seam contour holds and guides the material precisely without the need for a rail system. The machine can also be equipped with a pre-shaped presser foot for different curves which can be produced at low costs.

## TECHNICAL SPECIFICATIONS

- Dürkopp Sewing Head
- Beijer Electronics, Windows Based 256 Million Colour Supported Touch screen Control Panel
- Easy to use, with Pictures on the Operator Panel and with 50 Different Programming
- Sequential/Cycle Programming for Different Arm Elbow or Back seams
- PLC Control Unit Motion Control Unit with X/Y Axis Program
- Panasonic AC Servo Motor& Driver Controlled Clamp Unit on X Axis
- Sewing head moving on the Y axis
- Standardization for different arm elbow or back seams of 85 mm length maximum
- Program Recall from Panel for Sewing Different Arm elbow or back seams
- Sewing on X/Y axis for different arm elbow or back seams
- Automatic loading with vacuumed robot-arm during sequential sewing work
- Perfect completion of elbow-angular stitch at requested angle (between 10°-90° degrees)
- Programmable seam interruption for lining sleeve seams
- Vacuumed suction fitting for easy placement of fabric on machine
- Easy-to- convert and cost efficient pressing shape for higher quality of sewing
- Programmable start and end back tack or optionally adjustable stitch condensing
- Automatic Thread Cutting and Cleaning System at the end of sewing
- Specially Designed pneumatic stacking unit
- Vacuum motor connection preparation
- Error Detecting Systems
- Thread monitor
- Pneumatic fast stacking
- Stitch length 10 cm - 85 cm
- Stitch edge depth: 5 - 20 mm

## ACCESSORY OPTIONS

Various moulds for desired models  
Extra Reference Lasers Lamp

## AREAS OF USAGE

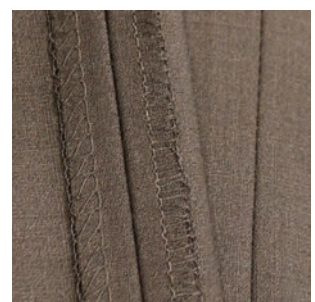
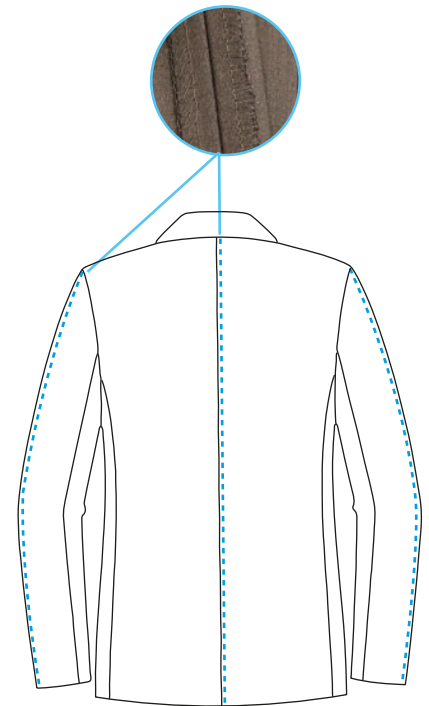
Arm elbow side, Arm elbow lining and jacket center-seam  
(with single or double slit) various curved or straight long stitches

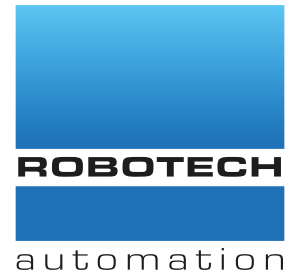
## TECHNICAL DETAILS

Max. Sewing Speed : 5.000 r.p.m  
Max. Stitch Length : 0,5 or 5 mm  
Stitch type : 301 ( Lockstitch )  
Connection Voltage: AC 230 V, 50/60 Hz  
Air Pressure : 6 bar

## DIMENSIONS

L: 210 cm / W: 100 cm / 130 cm  
Packing Size : 220 cm x 117 cm x 145 cm  
Machine Net Weight : approx. 210 kg  
Machine Gross Weight : approx. 250 kg





## KL 3100-EXT

PRE-GATHERING OF SLEEVES AND THE TAPING OF ARMHOLES



### PERFORMANCE

1500 - 1700 Jacket / 8 hours

185 - 220 Jacket / 1 hour





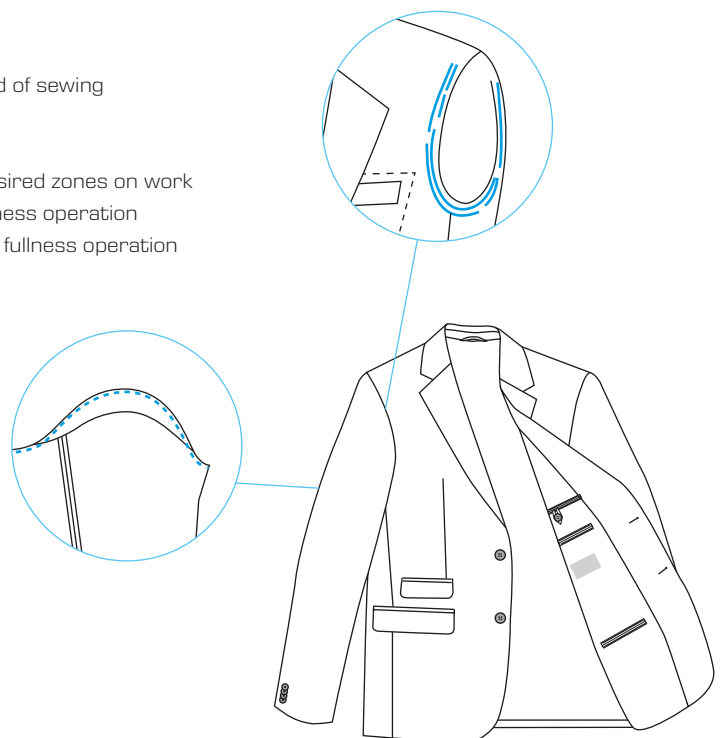
KL 3100-EXT the pre-gathering of sleeves and the taping of armholes provide the basis for an ideal fit of the sleeve. For these requirements the KL 3100-EXT provides a fully developed workplace which is precisely adjusted to the necessary working processes and quality demands and therefore serves as an important manufacturing resource for the work step pre-gathering sleeves and bridle-taping armholes.

## TECHNICAL SPECIFICATIONS

- Pegasus EXT 3216 Series or Juki MO-8900 Five thread overlook head with Differential top- and bottom feed
- Short table, Machine frame with adjustable height providing the possibility of working from the front
- Beijer Electronics, Windows Based 256 Million Colour Supported Touch screen Control Panel
- Easy to use, with Pictures on the Operator Panel and with 50 Different Programming
- Sequential / Cycle Programming for Different arm Models
- PLC Control Unit
- Efka 550 W Mini Stop DC Servo Sewing Motor
- Automatic tape loading System for guiding the tape under the feed
- Automatic tape Cutting at sewing end
- Automatic Start with Photocell or Pedal control
- Automatic Thread Cutting and Cleaning System at the end of sewing
- Air controlled zippy unit for perfect side stitching
- Air blowing system on table top to Relaxing workflow
- Graphical program enabling bottom and top fullness at desired zones on work
- Step Motor Controlled fullness Unit for automatic top fullness operation
- Step Motor Controlled fullness Unit for automatic bottom fullness operation
- Yarn waste compartment

## OPTIONS

- Universal Stacking



## TECHNICAL DETAILS

Max. Sewing Speed : 5.000 r.p.m  
 Max. Stitch Length : 11 mm or 5 mm  
 Stitch type : 301 ( Chain Stitch )  
 Connection Voltage: AC 230 V, 50/60 Hz  
 Air Pressure : 6 bar

## DIMENSIONS

L: 115 cm / W: 85 cm / H: 110 cm  
 Packing Size : 127 cm x 89 cm x 145 cm  
 Machine Net Weight : approx. 130 kg  
 Machine Gross Weight : approx. 150 kg

