

GM 5100

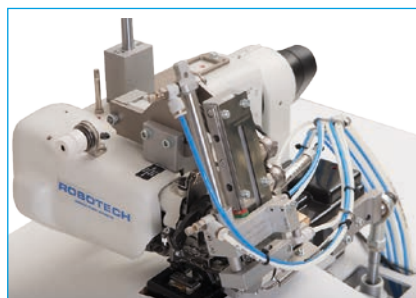
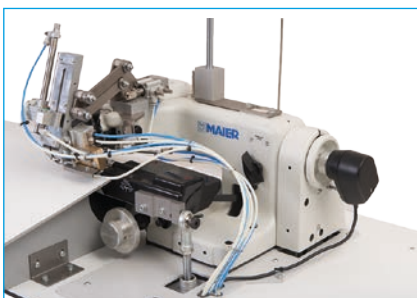
JACKET FRONT CHEST INTERLINING FEEDING AUTOMAT



PERFORMANCE

600 - 700 Jackets / 8 Hours

75 - 88 Jackets / 1 Hour



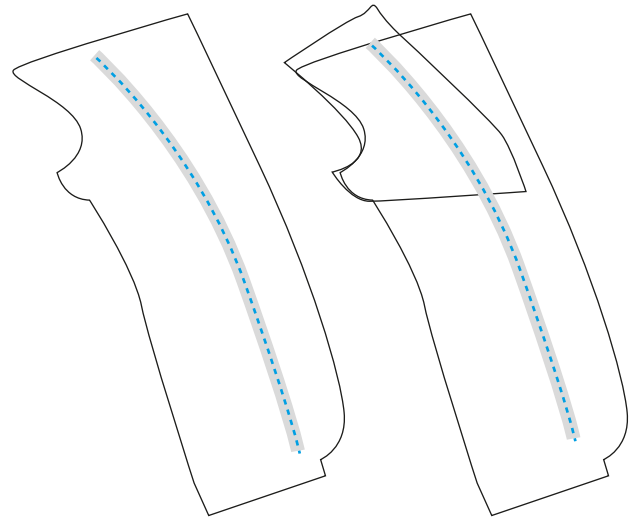
GM 5100 Single thread blind stitch sewing unit for fusible coated tape. Fusible tapes coated on one side can be attached to jacket fronts or facings to be fused to the jacket. In spite of a low work input this semi-automatic unit guarantees high quality combined with high efficiency. The machine is equipped with a tape feeding device, tape cutter, thread trimmer and the option to predetermine the seam length. The tape feeding device guarantees reliable tape feeding.

TECHNICAL SPECIFICATIONS

- Maier 251 Sewing Head with spring-loaded rib shaft/plunger
- EFKA 550 W Mini Stop DC or Direct Drive DC Servo Sewing Motor
- PLC Control Unit
- Pneumatic Feeding and cutting device of tape
- Automatic thread trimming and cleaning system at the end of sewing
- Automatic Foot lifting
- Button Controlled tape feeding unit lifting station to feed thread
- Circular table for easy fabric stitch flow
- Height-adjustable triangular machine frame enabling front operation

OPTIONS

- Step Motor Controlled tape feeding and Cutting Unit



TECHNICAL DETAILS

Max. Sewing Speed : 3.000 r.p.m
Max. Stitch Length : 5 - 8 mm
Stitch type : Single thread blind stitch
Tape Width: 15 mm - 25 mm
Connection Voltage: AC 230 V, 50/60 Hz
Air Pressure : 6 bar

DIMENSIONS

L: 125 cm / W: 85 cm / H: 125 cm
Packing Size : 127 cm x 89 cm x 145 cm
Machine Net Weight : approx. 170 kg
Machine Gross Weight : approx. 200 kg