

PT 3300

IMITATED HAND STITCH SEWING MACHINE



PERFORMANCE

1000 Jackets / 8 Hours

125 Jackets / 1 Hour

2000 Trousers / 8 Hours

250 Trousers / 1 Hour



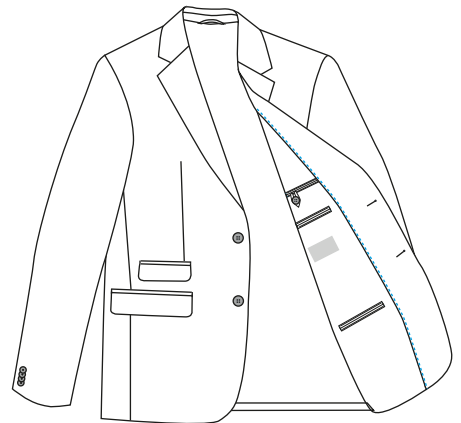
GM 5100 Single thread blind stitch sewing unit for fusible coated tape. Fusible tapes coated on one side can be attached to jacket fronts or facings to be fused to the jacket. In spite of a low work input this semi-automatic unit guarantees high quality combined with high efficiency .The machine is equipped with a tape feeding device, tape cutter, thread trimmer and the option to predetermine the seam length. The tape feeding device guarantees reliable tape feeding.

TECHNICAL SPECIFICATIONS

- **Brother S-7300 A NEXIO** is the best Sewing Head of the world with Direct Drive Electronic Transport
- For making mock pick stitch pin point (hand stitch pattern on one side and chain stitch on the other side)
- The sewing section system is not mechanical and is the first end sole direct drive head of the world, operating with a Step Motor.
- An Inferior Sewing Traction System equipped with a software preventing any breakage in textile,
- An Electronic Automatic Yarn Cutting Unit.
- Ability to cut the yarn shorter then its competitors.
- Option to electronically and automatically lift the feed,
- An ability to adjust the Yarn Point steps without changing any set or making any adjustment
- Programmable bottom transport system to avoid any pockering.
- An ability to sew in a range from 2 to 4 mm.
- It detects textile thickness in course of sewing, thanks to a photo thickness sensor and prevents any deformation in the sewing steps and adjusts the engine power
- Minimum Lubrication and operation system for stain prevention.
- Led lighting
- An ability to backup and upload any desired software, thanks to the USB part on the Machine
- Maximum 2100 rpm

OPTIONS

- Step Motor Controlled tape feeding and Cutting Unit

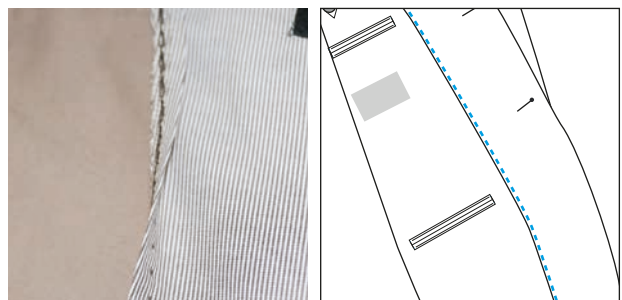


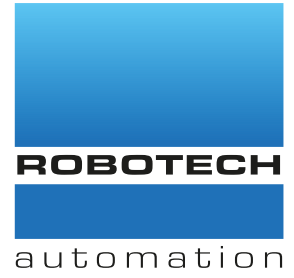
TECHNICAL DETAILS

Max. Sewing Speed : 3.000 r.p.m
 Max. Stitch Length : 5 - 8 mm
 Stitch type : Single thread blind stitch
 Tape Width: 15 mm - 25 mm
 Connection Voltage: AC 230 V, 50/60 Hz
 Air Pressure : 6 bar

DIMENSIONS

L: 125 cm / W: 85 cm / H: 125 cm
 Packing Size : 127 cm x 89 cm x 145 cm
 Machine Net Weight : approx. 170 kg
 Machine Gross Weight : approx. 200 kg





PT 6300-785

COMPUTERIZED DECORATIVE HAND STITCH MACHINE



PERFORMANCE

100 - 130 Jackets / 8 Hours

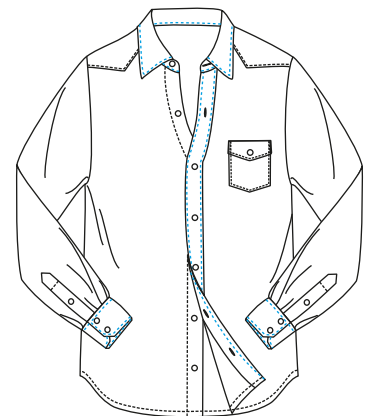
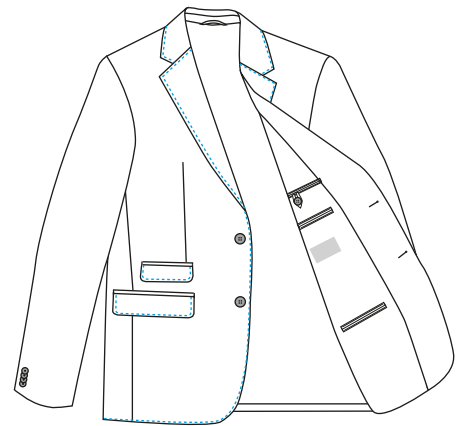
13 - 17 Jackets / 1 Hour



- 1: Classic mens wear, light ladies wear and shirts ; Heavy mens wear, ladies wear; Jeans and leather accessories.
- 2: This machine is equipped with computerized digital control system, to adjust sewing speed, needle gauge and stitch length.
- 3: The machine has automatic lifter of presser foot and knee lifter of presser foot and has the option to trim automatically.
- 4: It has half needle adjustment button, positive and negative pin-point shift button by foot, and backtacking function.
- 5: The decorative stitches could be changed easily and 1000 kinds of different hand stitches could be stored into the program.
- 6: It is also provided with needle protector, which means the needle will not break even under the conditions of high-speed sewing, thick fabrics and turning the material.
- 7: Besides special threads, it can also use lower quality threads to reduce thread cost.
- 8: Due to crocheting design, putting thread into hooked needle is all that you have to do. To sew thin fabrics all you need to do is to press the button to loosen the thread fingers.
- 9: The built-in direct drive motor reduces the number of mechanical parts which increases the machine's durability.

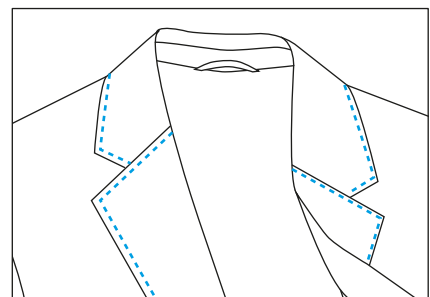
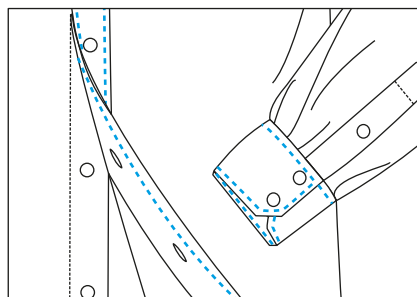
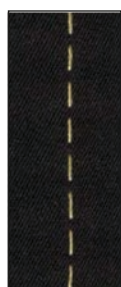
TECHNICAL SPECIFICATIONS

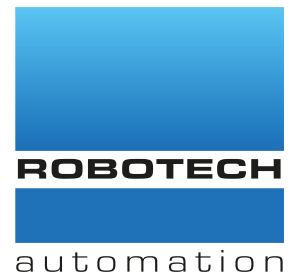
- Speed : 200 spm



DIMENSIONS

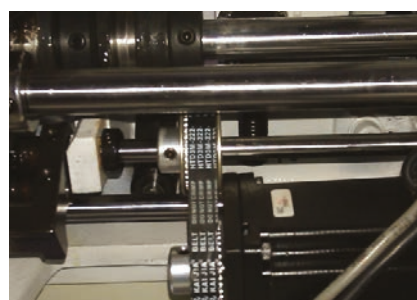
- L: 130 cm / W: 89 cm / H: 129 cm
- Packing Size : 140 cm x 100 cm x 145 cm
- Machine Net Weight : approx. 210 kg
- Machine Gross Weight : approx. 300 kg





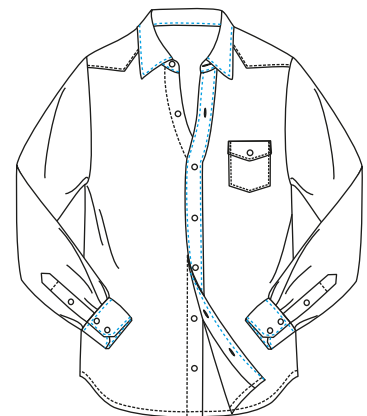
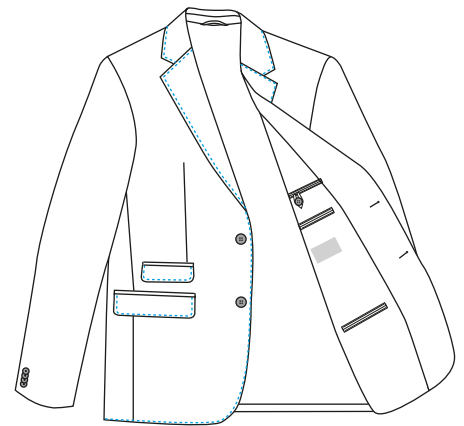
PT 6200-783D

COMPUTERIZED DECORATIVE HAND STITCH MACHINE



TECHNICAL SPECIFICATIONS

- Back- tack
- Digital stitch size
- LED operation panel
- Corner thread unhooking device
- Embedded integrated control system
- Automatic trimmer
- DD motor
- Un-twinkled LED cool-light lamp (protect the eyes)
- Single stitch distance (easy operation), adjustable stitch length various kinds of thread acceptable (lower thread cost)
- Adjustable thread tension (according to detail requests)
- Digital down stop position



TECHNICAL DETAILS

Motor power : 0.55-0.75kw

Input : 220V/50Hz

Electronic control Stitch length(mm) : 0.5mm-7.0mm

