

SS 3300-EX-IX SERGING AUTOMAT WITHOUT LINING



PERFORMANCE

900 trousers with 4 sides without lining / 8 hours

110 trousers with 4 sides without lining / 1 hour



The sewing unit SS 3300 - EX - IX is for automatic serging of trousers without lining as well as skirts and small pieces. The Pegasus EX 5204 head on the automat offers excellent solution for the very fast and rational serging of front and hind trousers parts ; skirts and small pieces. The automat has the capability to start the right side leg from the top and left side from the bottom depending on the application.

TECHNICAL SPECIFICATIONS

- Pegasus EX 5204, three thread overlock machine head
- Fabric edge controller which regulates and guides the entry of the work into the machine.
- Stitching start automatic with photocell feeding
- Long version Machine, Chassis with adjustable height
- Beijer , Windows Based 256 Million Colour Supported Touch screen Control Panel
- Easy to use, with Pictures on the Operator Panel and with 50 Different Programming
- Feature to operate with all sides in order/cycle programming
- PLC Control Unit
- Efka 550 W Mini Stop DC Servo Sewing Motor
- Thread cutting and suction at stitch beginning and end
- Regular seam widths
- Air blowing holes over the table top provides the easy flow of fabric to the back.
- Fabric holder piston
- Pneumatic stacker
- Short instruction times due to easy handling
- Extra working table
- Yarn waste compartment

OPTIONS

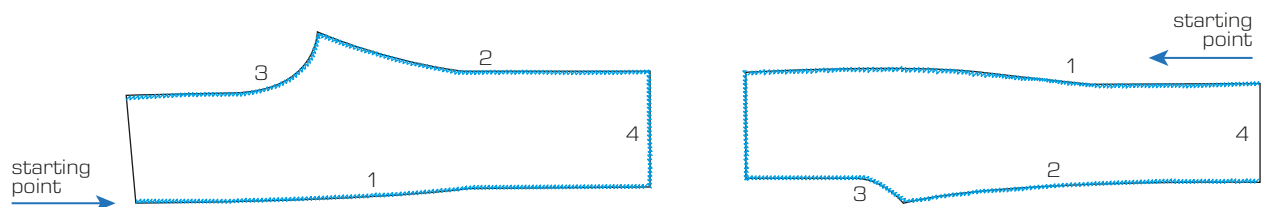
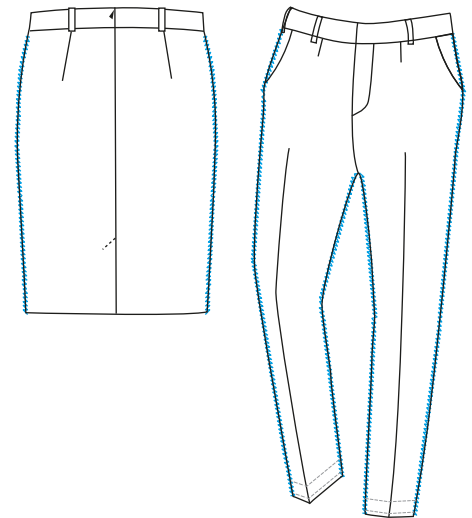
- Universal Stacker
- Stitch Widths: 4mm / 5mm or 6mm Head Plate

AREAS OF USAGE

- Trousers without lining for men and women, skirts and various small pieces

ADVANTAGES

- The curves on the crotch area can be sewn with high speed and precision
- The pre-programming from the Control Panel allows cycle sewing of varying sides of leg panels
- Pegasus EX 5204 is a very fast , flexible and efficient head and the together with programmable control panel it provides unmatched speed and efficiency compared to manual operation



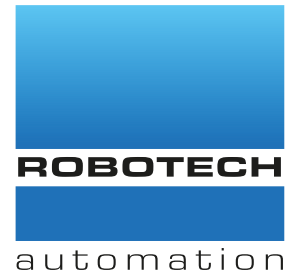
TECHNICAL DETAILS

Max. Sewing Speed : 6.000 r.p.m
 Max. Stitch Length : 1 or 3,8 mm
 Connection Voltage: AC 230 V, 50/60 Hz
 Air Pressure : 6 bar

DIMENSIONS

L: 155 cm / W: 105 cm / H: 120 cm
 Packing Size : 186 cm x 117 cm x 145 cm
 Machine Net Weight : approx. 145 kg
 Machine Gross Weight : approx. 185 kg





SS 5300 - EXT - IX

SERGING AUTOMAT WITH OR WITHOUT LINING



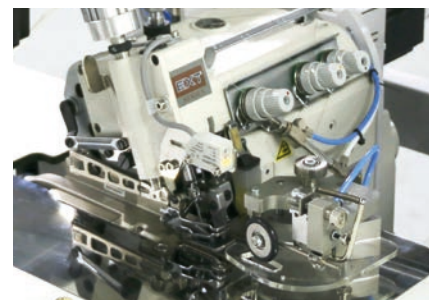
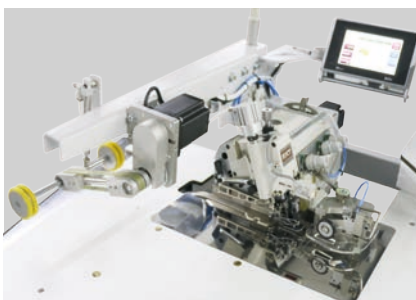
PERFORMANCE

2600 - 3000 Pieces with Lining / 8 hours

3600 - 4000 Pieces without Lining / 8 hours

325 - 375 Pieces with Lining / 1 hour

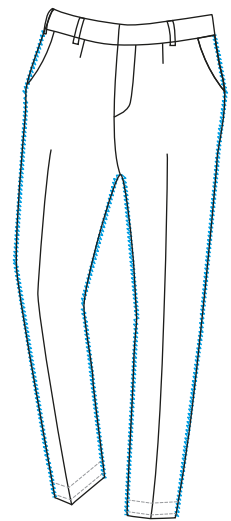
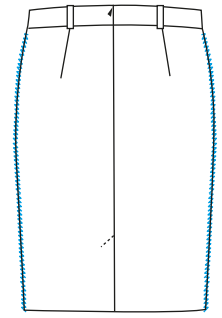
450 - 500 Pieces without Lining / 1 hour



This sewing unit is for automatic side serging of trousers with interlining on the front piece of trousers. Its differential top and bottom feed offers excellent solutions for the flawless serging of front and hind trousers parts. The unit also perfectly serges the pieces without lining.

TECHNICAL SPECIFICATIONS

- The SS 5300-EXT-IX is an overlock unit with integrated DC sewing motor.
- **Pegasus EXT 5204** three thread overlock machine head with top and bottom transport
- Long version Machine, frame with adjustable height
- **Beijer** , Windows Based 256 Million Colour Supported Touch screen Control Panel
- Easy to use, with Pictures on the Operator Panel and with 50 Different Programming/Cycle Sewing
- Feature to operate with all sides in order/cycle programming
- **PLC** Control Unit
- **Efka 550 W** Mini Stop DC Servo Sewing Motor
- Stitching start automatic photocell feeding
- Thread cutting and suction at stitch beginning and end
- Fabric edge controller which regulates end guides the entry of the work into the machine. Regular seam widths
- Air blowing units over the table top provides the easy flow of fabric to the back.
- Top palette carrier with step engine controller moving the work to the stacker
- Graphic program for using the bottom and top fullness on desired places
- Differential top-bottom feed with step motor for different fullness values in the processing of knee lining
- Differential top-bottom feed with step motor enables the processing of stretch materials
- Pneumatic fast stacking
- Short instruction times due to easy handling
- Extra working table
- Yarn waste compartment

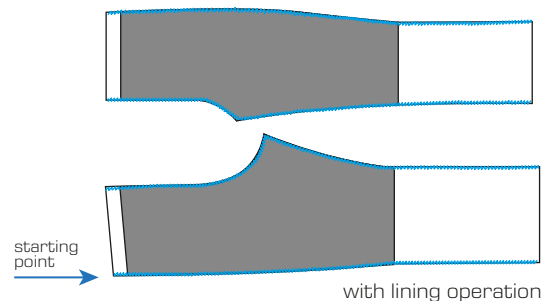
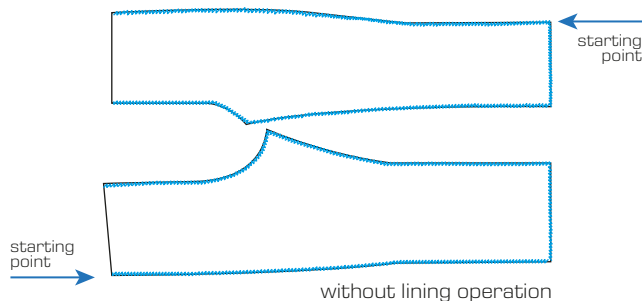


OPTIONS

- Universal Stacker
- Stitch Widths: 4mm / 5mm or 6mm Head Plate

AREAS OF USAGE

Trousers with or without lining for men and women



TECHNICAL DETAILS

Max. Sewing Speed : 6.500 r.p.m
 Stitch Length : 1.0mm or 4.0mm
 Connection Voltage: AC 230 V, 50/60 Hz
 Air Pressure : 6 bar

DIMENSIONS

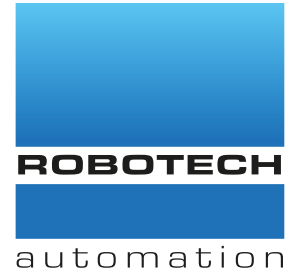
L: 155 cm / W: 105 cm / H: 120 cm
 Packing Size : 186 cm x 117 cm x 145 cm
 Machine Net Weight : approx. 145 kg
 Machine Gross Weight : approx. 185 kg



without Lining



with Lining



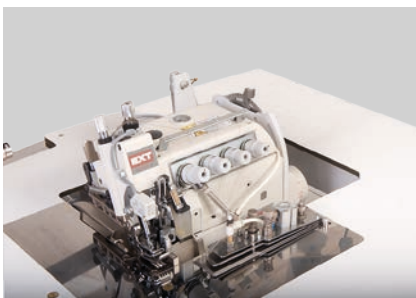
FX 2300-EXT-IX ECONOMIC VERSION SHORT VERSION SIDE SEAM AUTOMAT



PERFORMANCE

1400 pieces side edge or edge between legs / 8 hours

175 pieces side edge or edge between legs / 1 hour



The sewing unit FX 2300-EXT-IX is the economy version for sewing sideseams and inseams. The compact design is especially suitable for the universal use in the production of sportswear trousers. Due to the pneumatically moveable edge guide it is possible to trim the excess lengths of pocket bags.

Machine is equipped with pneumatically movable edge guide (Zippy) for trimming the extra lengths of pocket bags in sportswear trousers.

TECHNICAL SPECIFICATIONS

- Sewing head: **Pegasus EXT 3216-03**
- Integrated **Efka 550 W** Mini Stop DC Servo Sewing Motor
- Short table, Machine frame with adjustable height providing the possibility of working from the front
- Guide attachment for contours (Zippy)
- Vertical cutter with suction device
- Chain separator with suction device
- **PLC** Control Unit
- Thread cutting and suction at stitch beginning and end
- Air blowing units over the counter provides the easy flow of fabric to the back
- Constant seam width due to precise contour guidance (Zippy)
- Closing and serging can be executed in one operation
- Yarn waste compartment

OPTIONS

- Universal Stacking
- Pneumatic fabric holding piston guiding the work flow to the stacker
- **Beijer**, Windows Based 256 Million Colour Supported Touch screen with colour graphic display for easy operation and quick access to modifiable parameters.

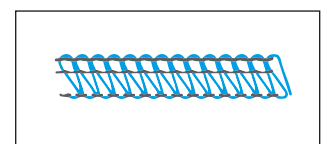
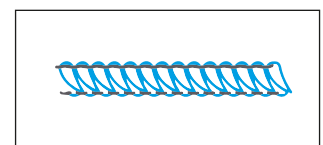


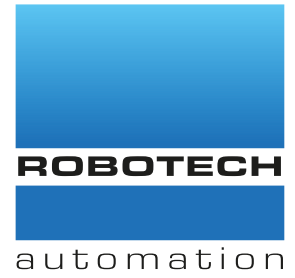
TECHNICAL DETAILS

Max. Sewing Speed : 6.000 r.p.m
 Max. Stitch Length : 1 or 3,8 mm
 Connection Voltage: AC 230 V, 50/60 Hz
 Air Pressure : 6 bar

DIMENSIONS

L: 85 cm / W: 105 cm / H: 120 cm
 Packing Size : 127 cm x 89 cm x 145 cm
 Machine Net Weight : approx. 110 kg
 Machine Gross Weight : approx. 135 kg





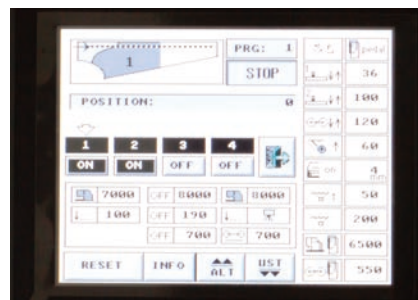
FX 3300-EXT-IX SHORT VERSION SIDE SEAM AUTOMAT



PERFORMANCE

1400 pieces side edge or edge between legs / 8 hours

175 pieces side edge or edge between legs / 1 hour



The sewing unit FX 3300 -EXT-IX is the economy version for sewing side seams and inseams. The compact design is especially suitable for the universal use in the production of sportswear trousers. Due to the pneumatically moveable edge guide it is possible to trim the excess lengths of pocket bags. Machine is equipped with pneumatically movable edge guide (Zippy). For trimming the extra lengths of pocket bags in sportswear trousers. The new control panel with touch screen and colour graphic display simplifies the programming considerably and allows a quick access to all parameters while programming, and sewing. Sewing unit FX 3300-EXT-IX is the economy version of its class. FX 4300-EXT-IX is without preparation table. It is not only suitable for the production of classic trousers but also for casual wear, as e. g. cotton trousers, "Dockers", "Chinos" and "US-Style" trousers.

TECHNICAL SPECIFICATIONS

- Sewing head: Pegasus EXT 3216-03
- Integrated Efsa 550 W Mini Stop DC Servo Sewing Motor
- Short table, Machine frame with adjustable height providing the possibility of working from the front
- Beijer , Windows Based 256 Million Colour Supported Touch screen with colour graphic display for
- Easy operation and quick access to modifiable parameters
- Easy to use, with Pictures on the Operator Panel and with 50 Different Programming
- Top palette carrier with step engine controller moving the work to the stacker
- Guide attachment for contours (Zippy)
- Vertical cutter with suction device
- Chain separator with suction device
- Feature to operate with all sides in order/cycle programming
- PLC Control Unit
- Thread cutting and suction at stitch beginning and end
- Air blowing units over the counter provides the easy flow of fabric to the back
- Pneumatic fabric holding piston guiding the work flow to the stacker
- Graphic program for using the lower-upper fullness on desired places
- Constant seam width due to precise contour guidance (Zippy)
- Perfect fit due to partial fullness operation in the upper and lower material ply with step motor control
- Equipment for manual sewing in the hip curve section (when processing side seam pockets and wing pockets)
- Special sewing set for trousers side seams with side seam pockets
- Closing and serging can be executed in one operation
- Very easy programming more flexibility
- Universal Stacking (Standard)
- Control, freely programmable
- Blowing nozzles in the table top for facilitating the material feed
- Yarn waste compartment

OPTIONS

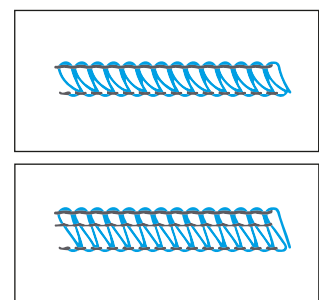
- Universal Stacking
- Automatic fullness operation by Step motor controlled top and bottom feed. Perfect fit due to partial fullness operation in the upper and lower material ply.

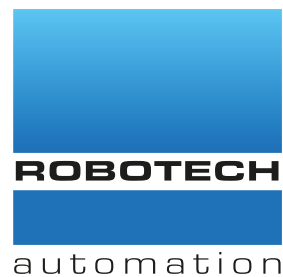
TECHNICAL DETAILS

Max. Sewing Speed : 6.000 r.p.m
 Max. Stitch Length : 1 or 3,8 mm
 Connection Voltage: AC 230 V, 50/60 Hz
 Air Pressure : 6 bar

DIMENSIONS

L: 85 cm / W: 105 cm / H: 120 cm
 Packing Size : 127 cm x 89 cm x 145 cm
 Machine Net Weight : approx. 120 kg
 Machine Gross Weight : approx. 145 kg





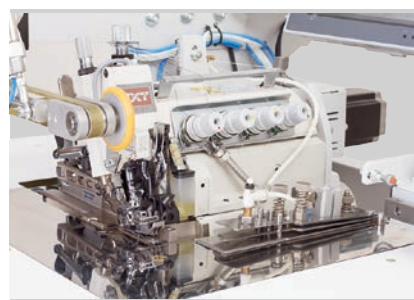
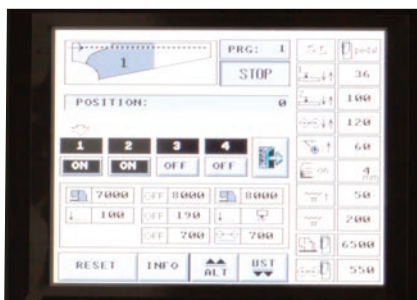
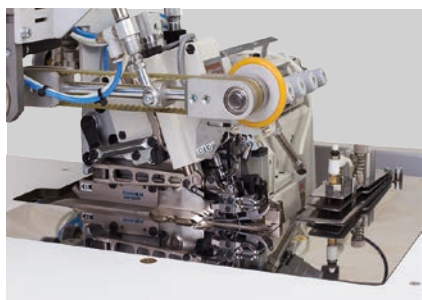
FX 4300 - EXT - IX LONG VERSION SIDE SEAMING AUTOMAT



PERFORMANCE

1400 pieces side edge or edge between legs / 8 hours

175 pieces side edge or edge between legs / 1 hour



The sewing unit FX 4300-EXT-IX is designed for closing seams, as well as trousers side seams and inseams or skirt seams in upper fabric. Alternatively double-chain stitch seams or safety seams (with 4 or 5 threads) can be sewn. Sewing unit is equipped with step motors for the top and bottom feed control and a preparation table with mouse and reverse device. Its flexibly adjustable guide rail allows a quick adaptation to different seam contours. The results are perfectly flat seams in classic trousers and in difficult materials.

The compact design is suitable for the universal use in the production of sportswear trousers, too. Due to the pneumatically moveable edge guide it is possible to trim the excess lengths of pocket bags. Closing side seams and inseams of sportswear trousers with safety seam. The new control panel with touch screen and colour graphic display simplifies the programming considerably and allows a quick access to all parameters while programming and sewing. It is suitable for the production of classic trousers as well as casual wear, ex: Cotton trousers, "Dockers", "Chinos" and "US-Style" trouser.

TECHNICAL SPECIFICATIONS

- Sewing head: Pegasus EXT 3216-03
- Integrated Efka 550 W Mini Stop DC Servo Sewing Motor
- Beijer , Windows Based 256 Million Colour Supported Touch screen Control Panel
- Easy to use, with Pictures on the Operator Panel and with 50 Different Programming
- Guide attachment for contours
- Vertical cutter with suction device
- Chain separator with suction device
- Feature to operate with all sides in order/cycle programming
- PLC Control Unit
- Thread cutting and suction at stitch beginning and end
- Automatic fullness distribution by step motor-controlled top and bottom feed
- Constant seam width due to precise contour guidance
- Perfect fit due to partial fullness distribution in the upper and lower material ply
- Equipment for manual sewing in the hip curve section (when processing side seam pockets and wing pockets)
- Special sewing set for trousers side seams with side seam pockets
- Touch screen with colour graphic display for easy operation and quick access to modifiable parameters
- Closing and serging can be executed in one operation
- Automatic photocell scanning of seam beginning and seam end
- Very easy programming for more flexibility
- Yarn waste compartment

OPTIONS

- Universal Stacker
- Automatic trouser hem mouse loading device

TECHNICAL DETAILS

Max. Sewing Speed : 6.000 r.p.m
 Max. Stitch Length : 1 or 3,8 mm
 Connection Voltage: AC 230 V, 50/60 Hz
 Air Pressure : 6 bar

DIMENSIONS

L: 165 cm / W: 105 cm / H: 120 cm
 Packing Size : 186 cm x 117 cm x 145 cm
 Machine Net Weight : approx. 145 kg
 Machine Gross Weight : approx. 185 kg

