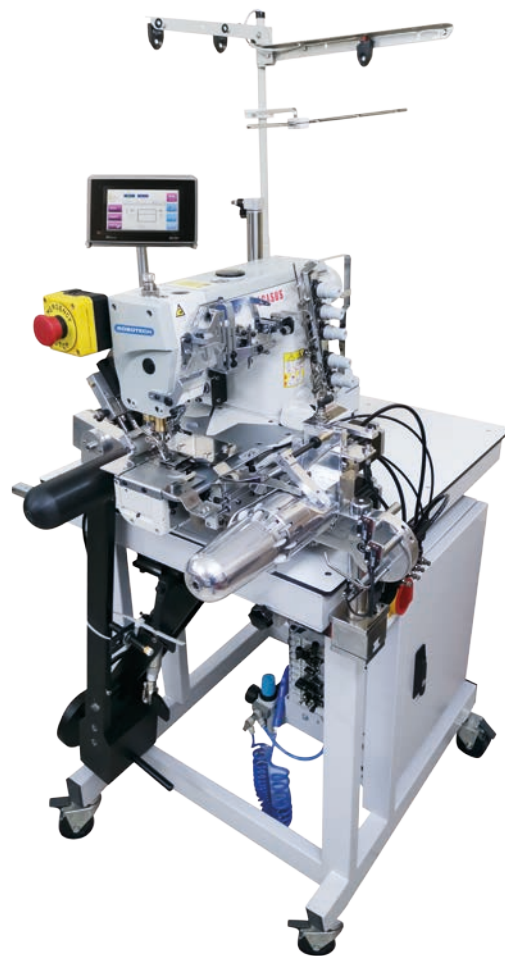
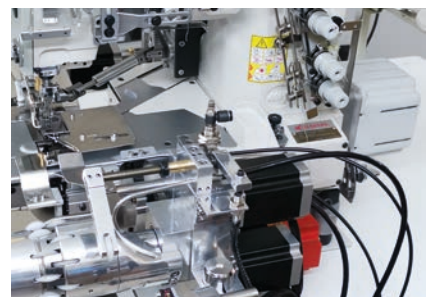
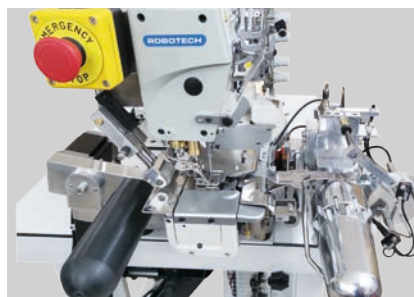
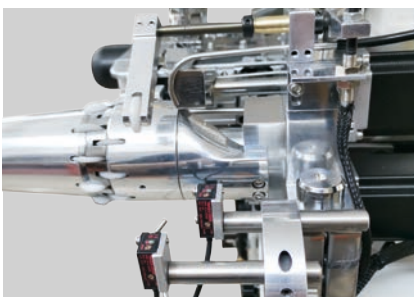


PE 6000 TUBULAR KNIT BOTTOM HEMMER



PERFORMANCE

3300 - 3600 Garments / 8 hours
400 - 450 Garments / 1 hour



PE 6000 is an automation for folding and hemming on skirts of T- shirts, underwear and similar garments. This automat improves speed, stitch quality and consistency. It saves time and labor since operator can use two machines simultaneously. Sewn garments are automatically stacked after the sewing cycle

TECHNICAL SPECIFICATIONS

- Pegasus W3662P Direct Drive Sewing Head
- Beijer Brand, Windows Based 256 Million Color Touch Screen Control Panel
- Easy to use operator panel with 50 different programming
- Sequential/Cycle Program for Different Stitch Sizes
- PLC Control Unit
- Servo sewing motor 220V 50/60 Hz.
- According to the needs, it can be integrated into models such as left knife, free-arm and short free-arm.
- Pulling systems works independently. Thus, the skirt can be slid on externally or internally when needed.
- The cylinder wheel type top puller system improves performance on all kinds of fabrics.
- Easily adjustable for different skirt lengths with adjustable skirt width adjustment.
- Precision Control; Pneumatically adjustable fabric tension allows precise and practical adjustment.
- Electronic motor edge controlling system
- The sewing step settings are adjustable on the LCD display.
- Automatic stacking of 40 garments.
- Works problem free single / double / multi side seam on all fabrics.
- Automatic thread trimmer.
- Sewing Head; Free-arm interlock or left knife interlock.

BENEFITS

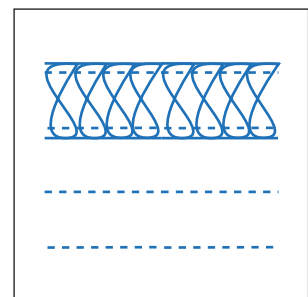
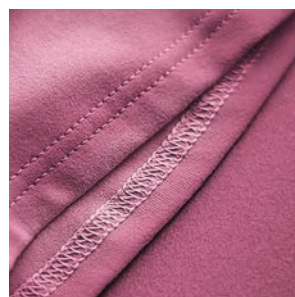
- The quality of production increases and the waste ratio decreases.
- All work sewn are of the same standards and high quality.
- Stacking is done automatically at the end of the process,
- Eliminates the need for skilled workers.
- One worker can operate 2 machines saving time and cost.

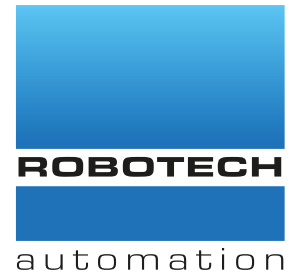
TECHNICAL DETAILS

Max. Sewing Speed: 6.000 sti/min
 Stitch type: Interlock
 Stitch Length:
2 needles: 3.2/4.0/4.8/5.6/6.4mm
3 needles: 5.6 – 6.4 mm
 Connection Voltage: AC 230 V, 50/60 Hz
 Air Pressure: 6 bar

DIMENSIONS

L: 110 cm / W: 65 cm / H: 125 cm
 Packing Size : 127 cm x 89 cm x 145 cm
 Machine Net Weight : approx. 150 kg
 Machine Gross Weight : approx. 180 kg





LB 6100 HC

AUTOMATIC CARE LABEL DISPENSER WITH HOT CUTTING

LB 6200 US

AUTOMATIC CARE LABEL DISPENSER WITH ULTRASONIC CUTTING



PERFORMANCE

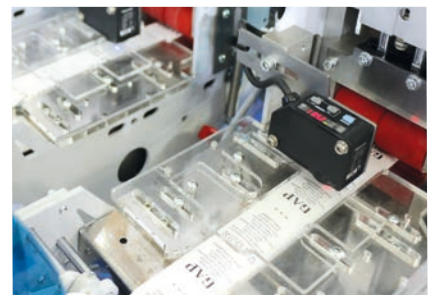
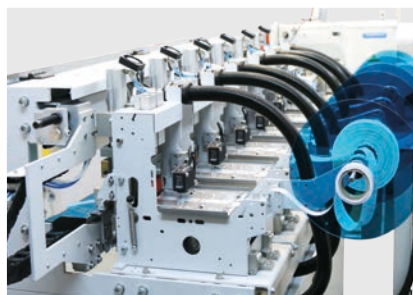
Performance : 5-6 sec. / cycle

LB 6100 HC : 900 - 1000 Label Set in 1 hour

LB 6200 US : 1100 - 1200 Label Set in 1 hour

LB 6100 HC : 7200 - 8000 Label Set in 8 hours

LB 6200 US : 8800 - 9600 Label Set in 8 hours



The machine is used for automatic joining of up to 8 care labels from label rolls.

LB 6100 HC is equipped with hot cutting system, which can be heat adjusted separately for every roll of care label.

LB 6200 US is equipped with ultrasonic cutting system, which is a very advanced new cutting technology for more precise and faster cutting.

TECHNICAL SPECIFICATIONS

- LB 6100 HC and LB 6200 US can cut and combine up to 4 or 6 or 8 head (8 head optional) labels from all types of Label rolls (synthetic, paper, satin).
- Label cutting start & finish position controlled by photocell
- Label cutting fine adjustment from panel
- Head is **Brother** model direct drive with Bar-Tack
- PLC Control System
- **Beijer** Brand, Windows Based 256 Million Color Supported Touch Screen Control Panel
- Illustrated on Operator Panel, Easy to use up to 50 Different Programming
- Sequential / Cycle programming for different label models
- Adjustable Bar-Tack width through touch screen panel
- Fast, efficient and easy to use!
- Error Detecting Systems
- Thread monitor

OPTIONS

- Label Folder can be ordered for each head separately (ultrasonic version only!)
- Auto label bagging unit (pre-bagging for washing safety)

LB 6100 HC

LB 6100 HC / 4 : (4 head)

LB 6100 HC / 6 : (6 head)

LB 6100 HC / 8 : (8 head)

LB 6200 US

LB 6200 US / 4 : (4 head)

LB 6200 US / 6 : (6 head)

LB 6200 US / 8 : (8 head)

DIMENSIONS for 6 Head

Unit of Bar-tack System : L: 82 cm / W: 60 cm / H: 122 cm

Weight: 260 Kg

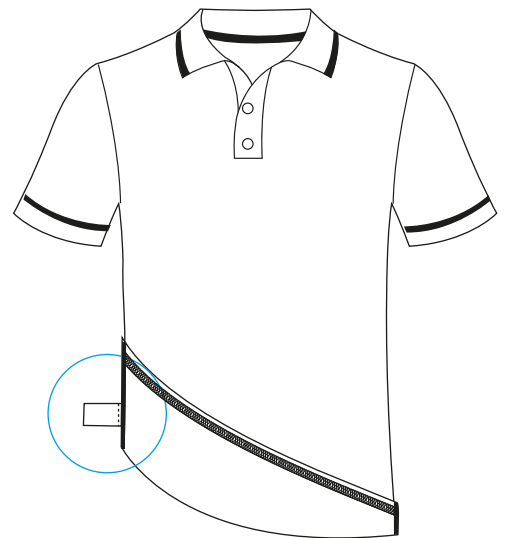
Unit of Dispenser System : L: 90 cm / W: 150 cm / H: 122 cm

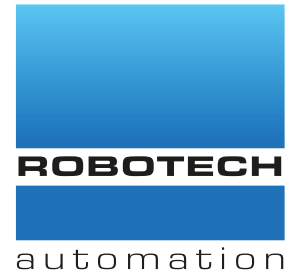
Weight: 300 Kg

Packaging Size : 220 cm x 100 cm x 135 cm

Machine Net Weight : Approx. 560 kg

Machine Gross Weight : 600 kg





AS 5100 CC / AS 5200 US HANGER LOOP ATTACHING AUTOMAT



PERFORMANCE

1000 - 1200 loops / 8 hours
125 - 150 loops / 1 hour



Satin and nylon hanger loop attaching automat with auto cutter and adjustable loop length system.

AS 5100 CC : Loop Curves face outside the garment with cold cut.

AS 5200 US : Loop Curves face outside the garment with ultrasonic cut.

TECHNICAL SPECIFICATIONS

- Direct Drive **Brother** head
- Step motor controlled adjustable loop length
- Automatic Thread cutter
- Knife cutting system for loops
- Nylon and Satin hanger possible
- Auto changer for basic and double breaker

AS 5100 CC

- Loop Length : 50 mm – 300 mm
- Loop Width : 3 mm – 10 mm

AS 5200 US

- Loop Length : 15 mm – 300 mm
- Loop Width : 3 mm – 10 mm

TECHNICAL REQUIREMENTS

Max Sewing Speed : 3500 rpm

Connection Voltage: Single-Phase A.C. 230 V, 50/60 Hz

Air Pressure : 6 bar

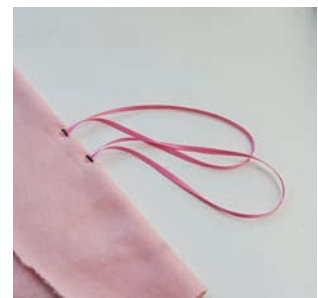
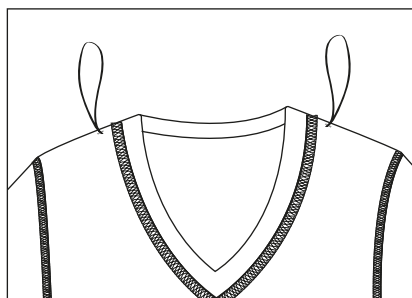
DIMENSIONS

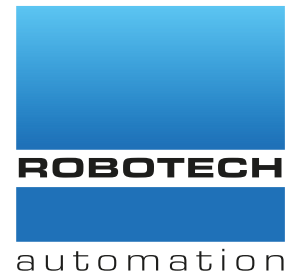
L: 115 cm / W: 80 cm / H: 120 cm

Packing Size : 140 cm x 90 cm x 125 cm

Machine Net Weight : approx. 160 kg

Machine Gross Weight : approx. 200 kg





AS 6100 CC / AS 6200 US HANGER LOOP ATTACHING AUTOMAT



PERFORMANCE

1000 - 1200 loops / 8 hours

125 - 150 loops / 1 hour



Satin and nylon hanger loop attaching automat with auto cutter and adjustable loop length system.

AS 6100 CC : Loop Curves face inside the garment with cold cut.

AS 6200 US : Loop Curves face inside the garment with ultrasonic cut.

TECHNICAL SPECIFICATIONS

- Direct Drive **Brother** head
- Step motor controlled adjustable loop length
- Automatic Thread cutter
- Knife cutting system for loops
- Nylon and Satin hanger possible
- Auto changer for basic and double breaker

AS 6100 CC

- Loop Length : 50 mm – 300 mm
- Loop Width : 3 mm – 10 mm

AS 6200 US

- Loop Length : 15 mm – 300 mm
- Loop Width : 3 mm – 10 mm

TECHNICAL REQUIREMENTS

Max Sewing Speed : 3500 rpm

Connection Voltage: Single-Phase A.C. 230 V, 50/60 Hz

Air Pressure : 6 bar

DIMENSIONS

L: 115 cm / W: 80 cm / H: 120 cm

Packing Size : 140 cm x 90 cm x 125 cm

Machine Net Weight : approx. 160 kg

Machine Gross Weight : approx. 200 kg

